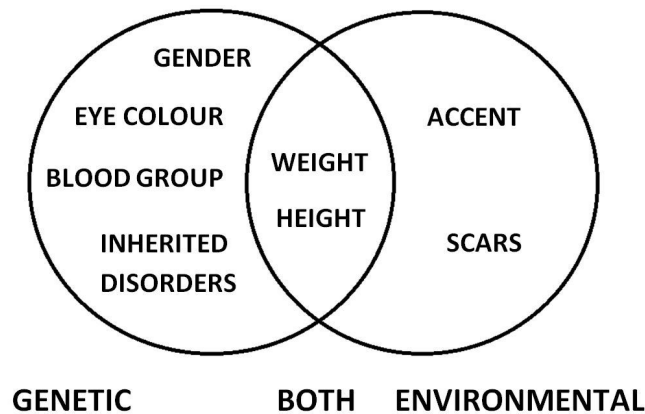


## Genes - Variation KEY LEARNING

Everyone is different. We call this variation.  
 There is variation between individuals of the same species.  
 Think about how the people are different from each other.

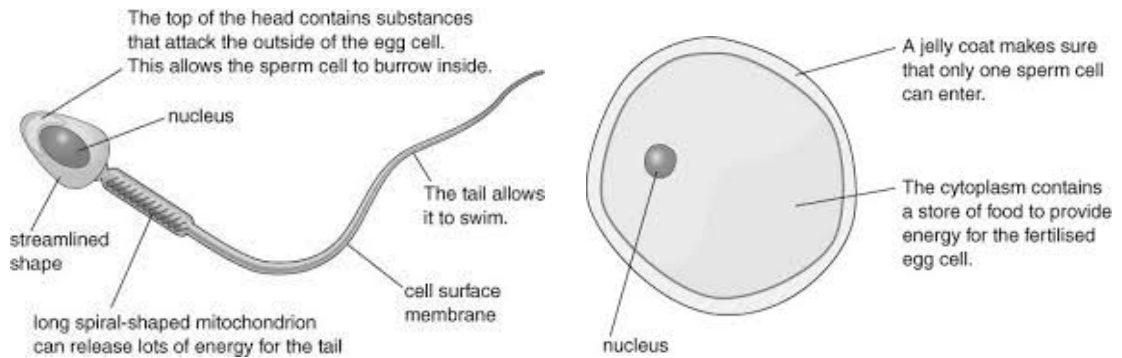


How are the dogs different from each other?  
 Variation can be inherited (genetic), caused by the environment or a combination of both.

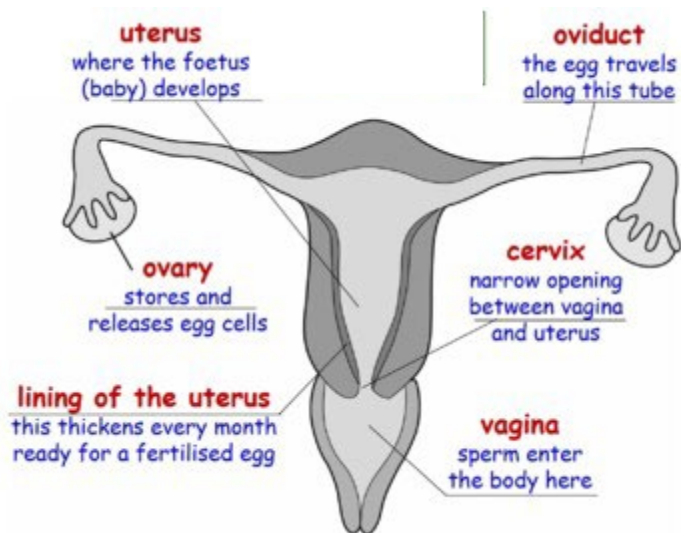
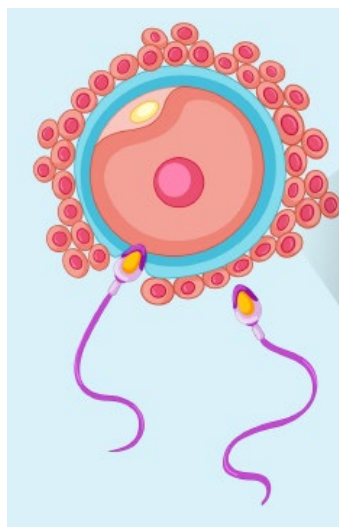


<b>Genes - Key Learning</b>
Everyone is different. We call this variation.
Some variation is inherited (genetic), some is caused by the environment and some is a combination of both.
The male sex cell in animals is a sperm, the female is an egg.
The vagina is where the penis enters the female's body and sperm is received.
A sperm joining an egg is called fertilisation.
A fertilised egg grows into a baby in the uterus (womb).
The menstrual cycle lasts approximately 28 days and stops if a sperm fertilises an egg.
Menstruation/the period is the loss of the lining of the uterus during the menstrual cycle.

**Genes - Human Reproduction KEY LEARNING**



The male sex cell in animals is a sperm, the female is an egg.



Here a sperm joins an egg during fertilisation.

The fertilised egg grows into a baby in the uterus (womb).

Menstrual cycle
Starts at puberty.
Essential for pregnancy (reproduction).
Lasts 28 days.
We call menstruation 'the period'.
Once a month.
Blood is lost as the uterus lining breaks down.
Stops during pregnancy.

